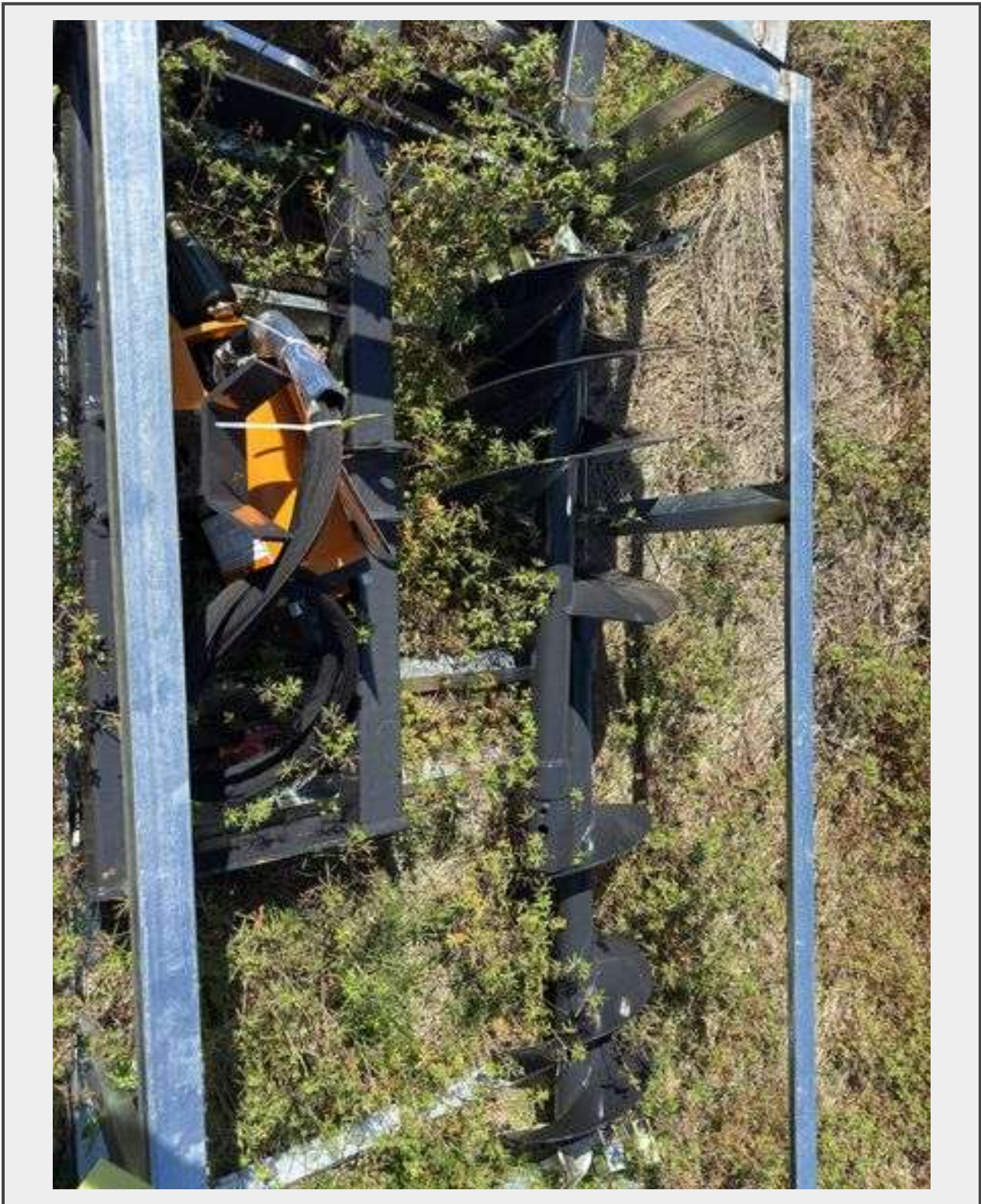


Sale Name: May - Factory Direct Equipment Auction

LOT 425 - Skid Steer Auger Drive & Bits - 12 & 18in - 35in Depth



Description

Wolverine 2024 Skid Steer Auger Drive & Bit Attachment Comes with auger dimensions:12 in and 18 in Effective working depth: 35 in Hydraulic Flow Required:8-22 gpm Max. Cont. Operating PSI:3000 psi Output Shaft:2.56" Round

Quantity: 1



<https://bids.redfieldgroup.com/>