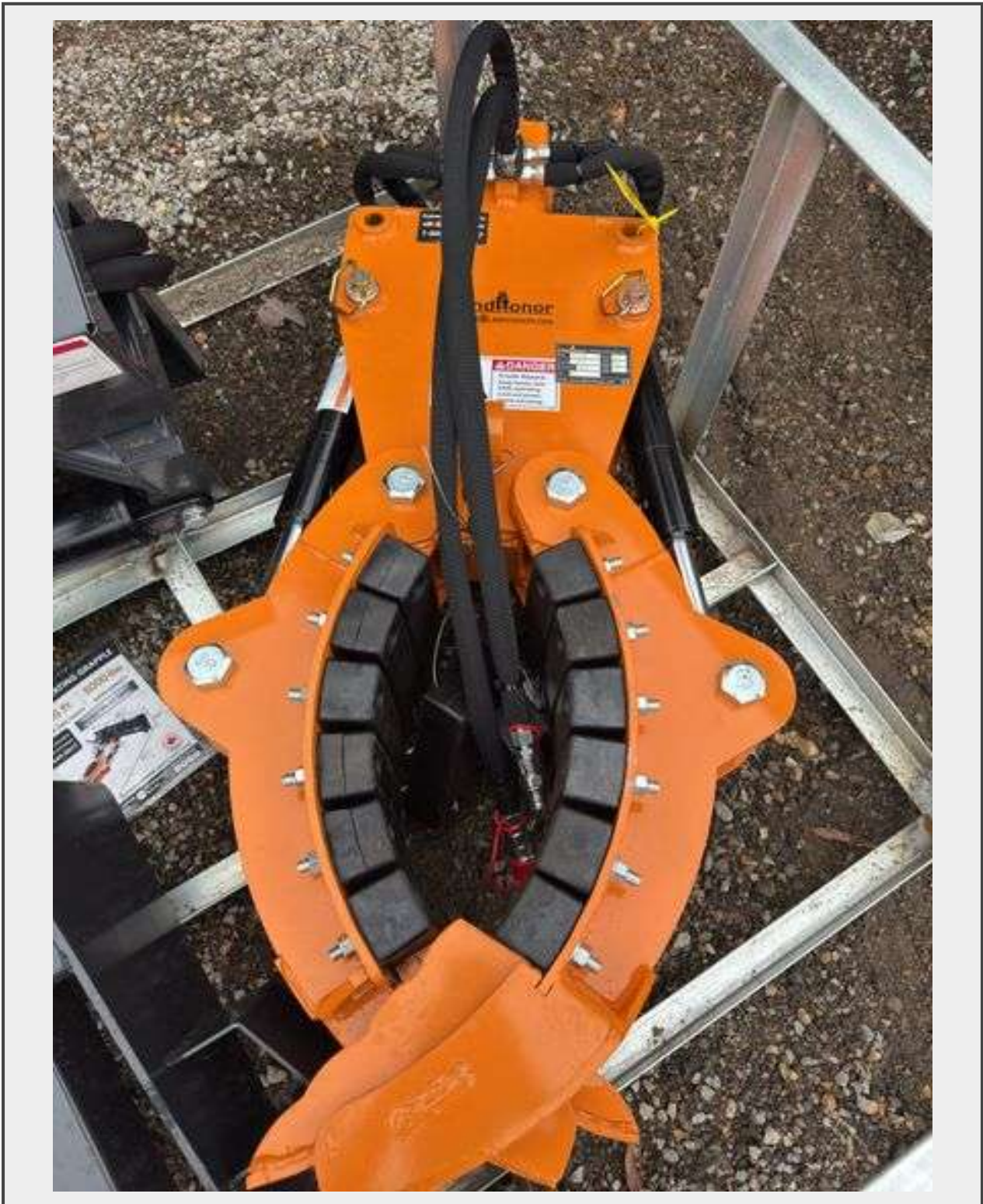


Sale Name: Late July BLOWOUT Equipment & Metal Buildings Auction

LOT 460 - Skidsteer Rotating Grapple - 5000lb Rock/2000lb Tree Capacity



Description

Hydraulic Recommendations 15-20 GPM @ 3000 psi Return Pressure (starting pressure 3000 psi, 20 gpm) Rated Weight Capacity for Handling Rocks 5000 lbs (2268 kg) Rated Weight Capacity for Handling Trees 2000 lbs (907 kg) Max Tree Length 35 ft (10.6 m) Rotation Angle . 0° - 127° to Operator's Left Attachment length, width and height 49.6*23*11.4 in Base LxWxH 60.2*20.2*23.5 in

Quantity: 1



<https://bids.redfieldgroup.com/>