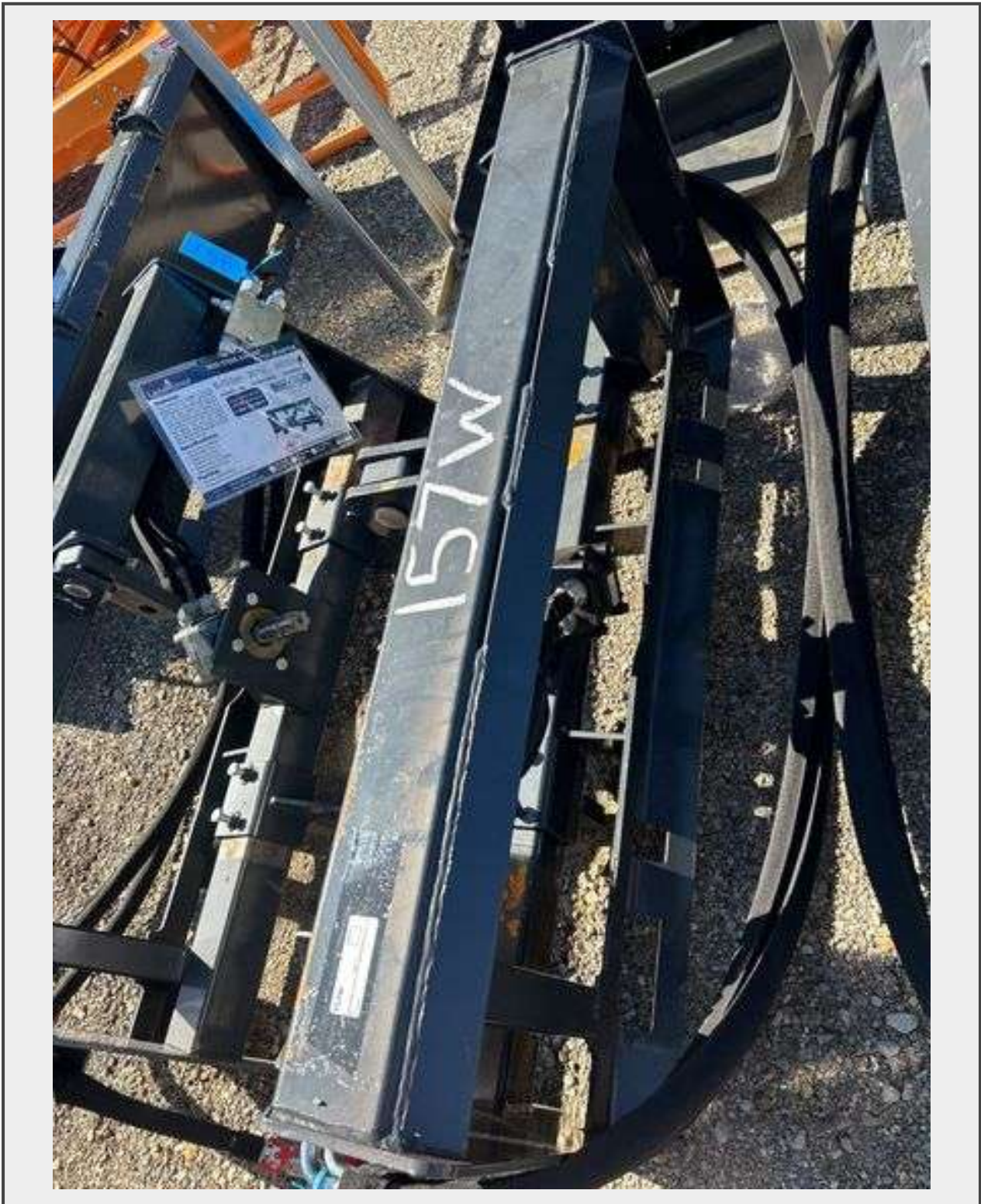


Sale Name: Fall Equipment Liquidation: Excavators, Implements & Metal Buildings
LOT 157W - Skid Steer 3 Point Hitch Adapter PHA-16-2C - 25 HP



Description

Unused 2025 Skid Steer 3 Point Hitch Adapter Weight of unit (with pendant) 181 lbs
Maximum pressure 3000 psi Overall width 49 " Height of unit 21 " Length of unit 13 "
Machine flow 15-20 Gpm Machine power 25 HP

Quantity: 1



<https://bids.redfieldgroup.com/>