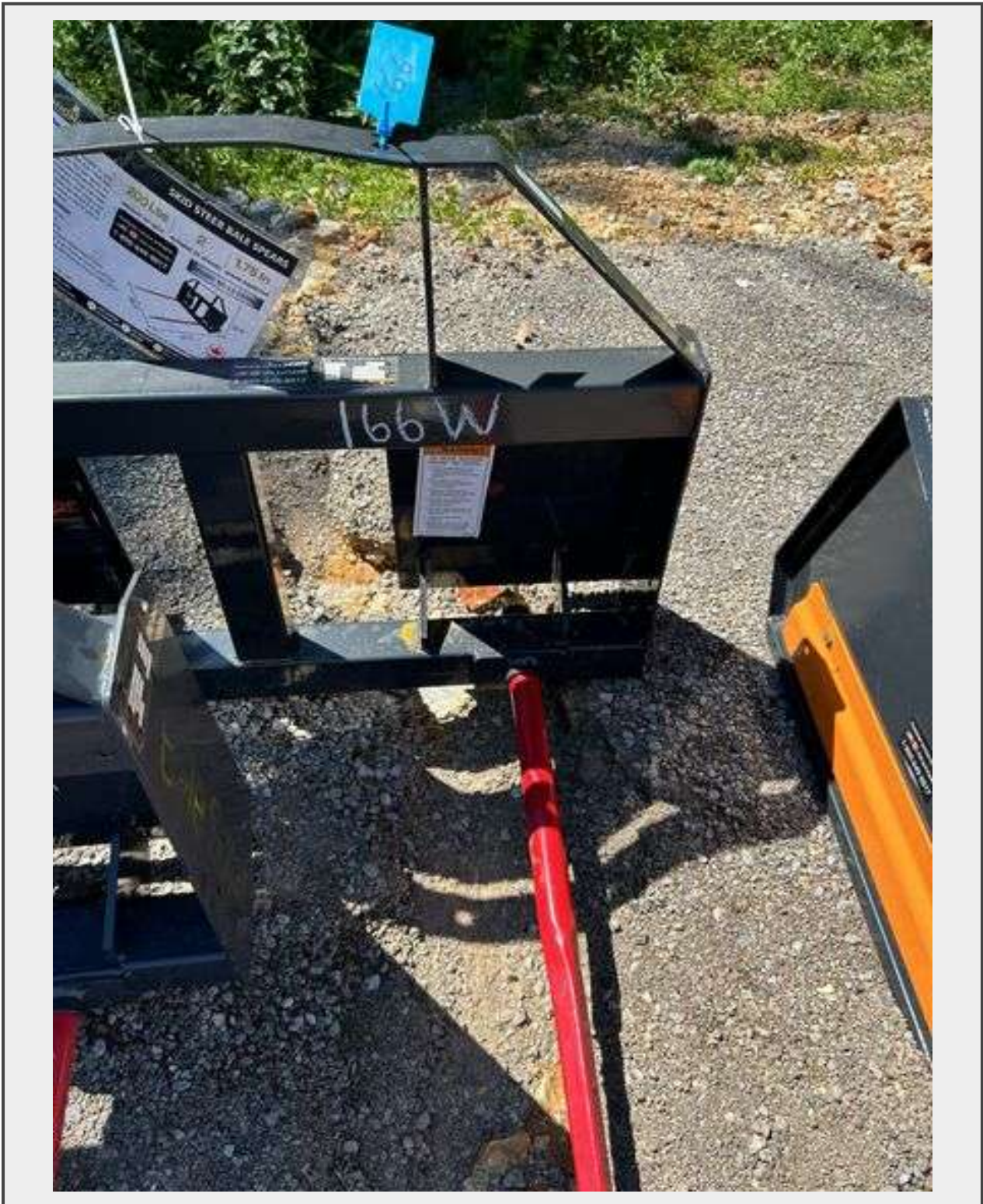


**Sale Name:** Fall Equipment Liquidation: Excavators, Implements & Metal Buildings  
**LOT 166W - Skid Steer Bale Spear BS-12-2500G - 2 Spear 2500 lbs Capacity**



### Description

Unused 2025 Skid Steer Bale Spear Height 30.8" Width 48.8" Weight of Unit 200 Lbs  
Number of Spears 2 Frame Lift Capacity 24" from face of frame 2500 Lbs Spear Probe  
Length Face of Frame to End of Point 45" Spear Diameter 1 3/4" Hitch Style Universal  
Quick Attach Style Hitch

**Quantity: 1**



**<https://bids.redfieldgroup.com/>**